

## Первый неоконченный квартет

## First Quartet

## Violino I

С. РАХМАНИНОВ  
SERGE RACHMANINOFF

## II

Романс

Romance

Andante espressivo  
con sordino

*p*

*cresc.*

*f*

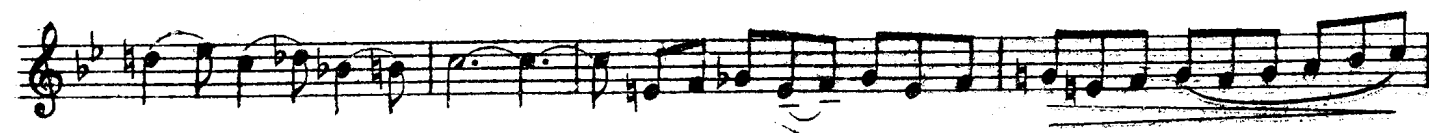
*dim.*

*p*

*cresc.*

*f*

## Violino I



## Violino I

*p*

80

*cresc.*

*ritardando*

**Tempo I**

*f*

90

*cresc.*

*ff*

*f*

*dim.*

100

*p*

*p*

110

*pp*

*via sordino*

Detailed description: This is a page of a musical score for Violino I, measures 80 through 110. The music is written on a single staff in G major (one sharp) and 4/4 time. The score includes various dynamic markings such as *p* (piano), *f* (forte), *ff* (fortissimo), *cresc.* (crescendo), *dim.* (diminuendo), and *pp* (pianissimo). Performance instructions include *ritardando* (rushing) and *via sordino* (using the mute). Measure numbers 80, 90, 100, and 110 are indicated in boxes. The notation features a variety of note values, rests, and phrasing slurs.

## III

Скерцо

Scherzo

## Violino I

Allegro

senza sordino

*pp*

10

*f* *p*

20

30

40 *ppp*

50

*pizz.* *arco* *ppp* *p*

## Violino I

60

70

80

90

100

110

120

*f*

*sf*

*sf*

*sf*

*pp*

*p*

*mf*

*p*

*f*

*sf*

*sf*

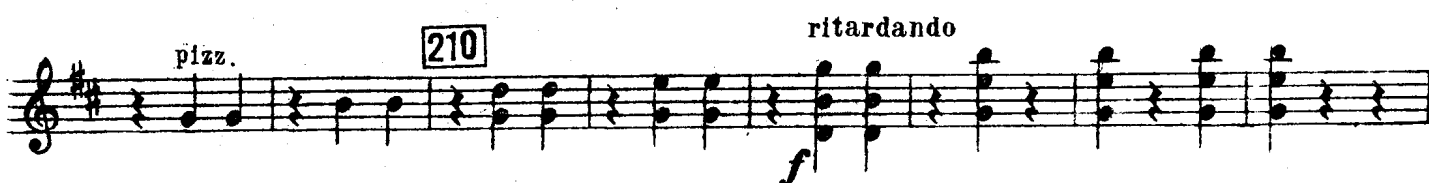
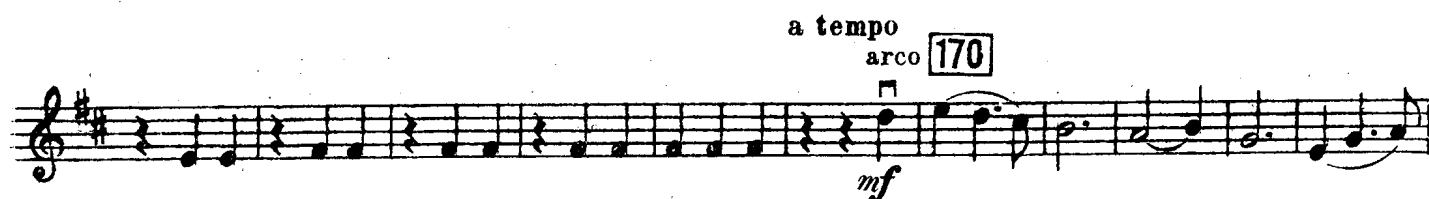
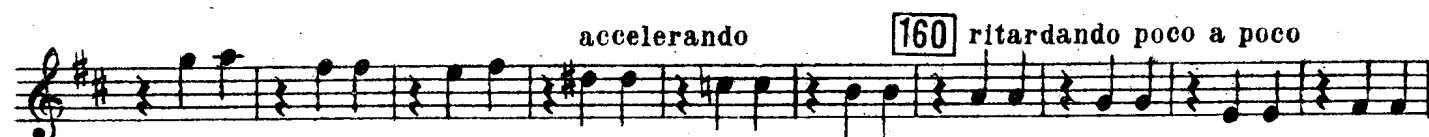
*sf*

## Violino I

## TRIO

Meno mosso

pizz.



**Violino I***Scherzo da Capo***Tempo I (Allegro)**

arco

*pp*

10

20

*p*

*f*

30

40

*ppp*

*p*

50

*plizz.*

*ppp*

*arco*

60

70

80

## Violino I

Violino I musical score, measures 85-240. The score is written for Violino I in G major (one sharp). The key signature is G major (one sharp). The time signature is 4/4. The score includes measures 85-90, 100-110, 120, and the CODA section (measures 220-240). The score includes various dynamics and articulations.

Measures 85-90: *f* pesante *sf* *sf* *f* *sf* *sf*

Measures 100-110: *pp* *p* *mf* *f*

Measures 120: *f*

CODA

Measures 220-240: *f* *diminuendo poco a poco* *pp* *ppp* *ff* *pizz.* *p*